

Happy Vidhyashry Block-C

RERA No.: RAJ/P/2024/3096

Marketed By :

Gokul kripa
SALES AND MARKETING PVT. LTD.
AN ISO 9001:2015 CERTIFIED COMPANY
AN ISO 14001:2015 CERTIFIED COMPANY



Project By :
**Delight
Infraheights LLP**



At Village :-Chachiyawas, Sikar Road, Near Bhagwant University, Ajmer, Raj.



Major Project Attractions

Govt. Offices

- Rajasthan Mahila Kalyan Mandal Cha. (600 mtr.)
- Inspector General, Registration & Stamps Department (4.9 km)
- Panchayat Training Centre (5.5 km)
- Revenue Research & Training Institute RRTI (8.4 km)
- Ajmer Smart City Office (8.8 km)
- ADA Under Construction New Office (8.9 km)
- RTO Office Ajmer (9 km)
- Sub Registrar Office (10 km)
- Rajasthan Public Service Commission (RPSC), (10.2 km)
- Excise Department (10.2 km)
- Senior Town Planning Department (10.4 km)
- New Board of Sec. Edu. Raj. (RBSE Board) (10.4 km)
- Regional Office Of CBSE (10.6 km)
- District & Sessions Court (11.2 km)
- Police Training Center (11.8 km)
- CRPF Center (12.9 km)
- Management & Commerce Institute of Global (13.6 km)
- NWR Ajmer diesel loco and wagon workshop (15.2 km)
- HMT Machine Tools Limited (18.4 km)
- HMT GSS and JEN office (18.4 km)
- Indian Oil Corporation Servo cfa (18.9 km)
- National Researcher Centre on Seed Spices (24.1 km)

Hospitals

- Br Shastri Hospital (1.9 km)
(Under Construction)
- Janana Hospital (4.1 km)
- Kshetrapal Hospital (8.7 km)
- Bharat Hospital (9.4 km)
- UTTARA Charitable Hospital (10.2 km)
- Mittal Hospital (13.1 km)
- St. Francis Hospital (13.4 km)
- Sewa Mandir Foundation (14.5 km)

Restaurant & Hotel

- Shakti Resort Puskar Bypass Road (5 km)
- Pratap Mahal, Puskar Bypass (7.8 km)
- Gorbant Garden Restaurant (8.5 km)
- Paradizzo hotel & Resorts (9.1 km)
- Bhanwar Singh Palace (9.7 km)

Happy

Vidhyashry Block-C

RERA No.: RAJ/P/2024/3096

Shopping Entertainment & Recreational Activity

- D-Mart (9.4 km)
- OM Toyota (10.1 km)
- Vishal Mega Mart (10.1 km)
- Anasagar Chaupati garden (10.9 km)
- Maya Mandir Multiplex Cinema Hall (11 km)
- Subhash Udhyan (11.2 km)
- Patel Stadium (11.4 km)
- Seven wonder Park (12.3)
- Jain Temple, Gyanoday Nagar (15 km)
- Krishi Upaj Mandi (17 km)
- Birla City Water Park (23.6 km)
- Greenland Water Park (25.4 km)

RIICO Palra Industrial Area (17.5km)

- Sandeep Motors Pvt. Ltd.
- Godrej Agrovet Limited
- IGL CNG & LNG Filling Station
- Multi Auto Car Workshops
- gayatri sands pvt. Ltd
- Parwani Castings & Machines Pvt. Ltd.
- Fatehpuria Machines Pvt. Ltd.
- Agrodaya Products Pvt. Ltd.

Makhupura Industrial Area (19.6km)

- Shrinath Cargo Private Limited
- Parle Factory
- Laxmi plastic industries
- Ajmer Wood Products Ltd.
- Schoolnet india ltd. fitness centre
- Shri Vishwakarma Engg. Works
- Shree rajasthan industries
- Shree Ambika Cable Machine Private Limited
- Mahindra First Choice Services - 4 Wheeler
- RSRTC Workshop

Transportation

- Pushkar Bypass Rd (2.2 km)
- Kayad Chauraha (7 km)
- National Highway (NH 8), (7.5 km)
- Ghooghra Helipad (8.8 km)
- Ajmer Dipot work shop Stand (9.2 km)
- Ladpura Road (9.5 km)
- Ajmer Bus Depo (10.9 km)
- Ladpura Railway Station (12.7 km)
- Ajmer Junction (12.7 km)
- Madar Junction (13.3 km)
- Kishangarh Airport (27.6 km)

School & College

- Bhagwant University, Ajmer (200 mtr.)
- Delhi World Public School (DWPS) (350 mtr.)
- Ajmer Institute of Technology College (2.9 km)
- Medical Collage(Ayurved Nursing College), (4.5 km)
- Aryan College (4.8 km)
- Neerja Modi School (4.8 km)
- RR College of Nursing (5.9 km)
- Sanskriti The School (6.3 km)
- MDS University, Pushkar Bypass Road (7.3 km)
- Sophia Girls' College Ajmer (10.7 km)
- National Military School (11.2 km)
- JLN Medical Collage (11.5 km)
- Prithviraj Chauhan Government College (13.8 km)
- Mayo College Ajmer (14 km)
- Government Engineering college, Kiranipura (15.7 km)
- Dayanand College (17 km)
- Govt. Polytechnic College, Makhupura (19.2 km)
- Govt. Women Engineering College (19.4 km)
- Govt. ITI College (19.8 km)

ATTRACTIONS OF TOURIST PLACES OF AJMER



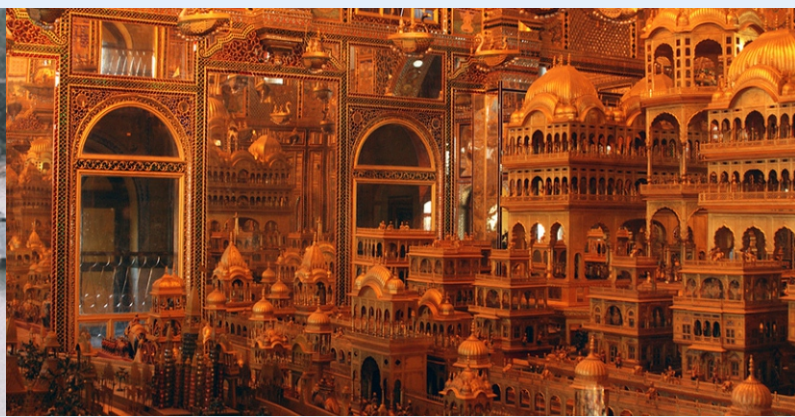
THE AJMER SHARIF DARGAH



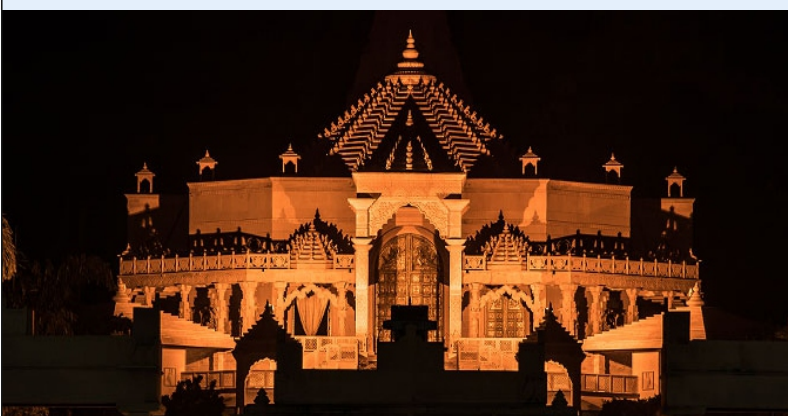
ADHAI DIN KA JHONPDA



ANASAGAR LAKE



SONJI KI NASIYAN



NARELI JAIN TEMPLE



SAI BABA TEMPLE



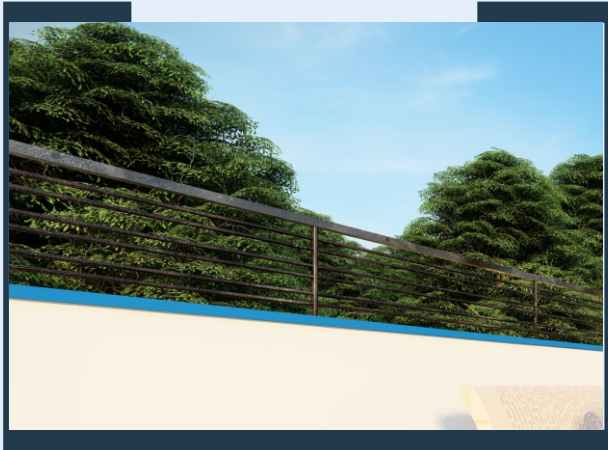
AJMER GOVERNMENT MUSEUM



TARAGARH FORT



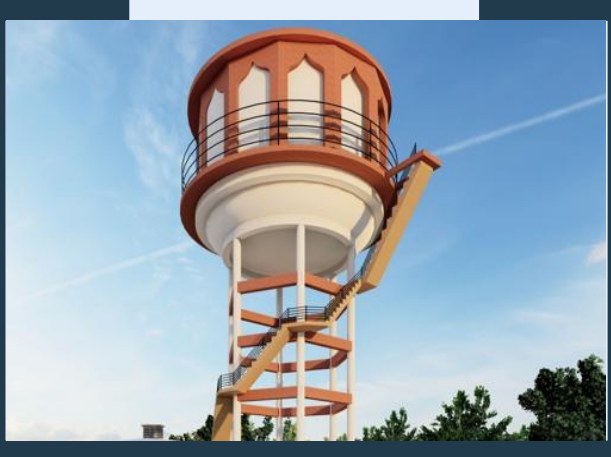
***ENTRANCE GATE
from 200ft Road***



Outer Boundary Wall with Wire Fencing



Interlocking Tiles Road



Water Tank



Curve Stone



Park Gate



Park Boundary Wall



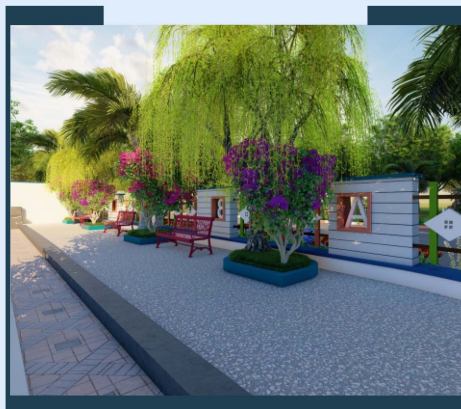
Volleyball Court



Basketball Court



Open Gym



Plantation



Kids Play Area

Amenities



Sewer Chamber



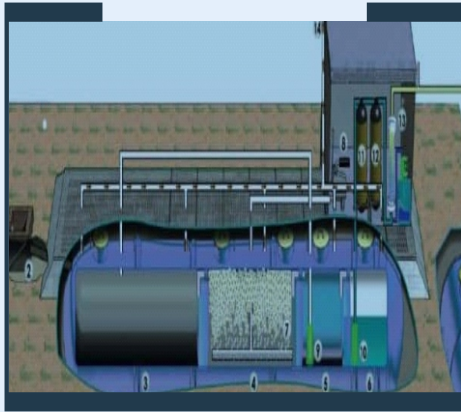
Underground Electricity



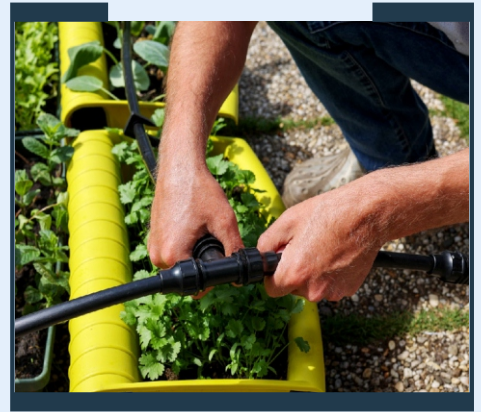
Street Lights



Water Borewell



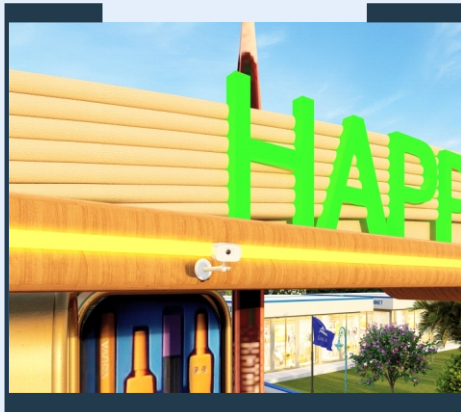
Sewage Treatment Plant



Drip Irrigation



Green Plantation



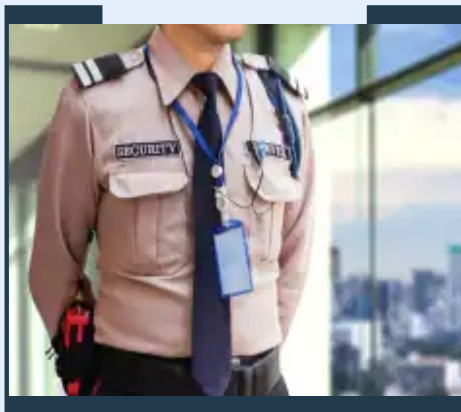
*CCTV Surveillance
(Only Entrance Gate)*



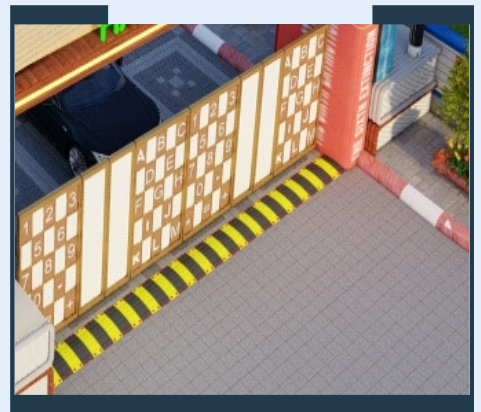
Garbage collection



Arrow Plot Demarcation



*Security Guard
(For Common Area)*



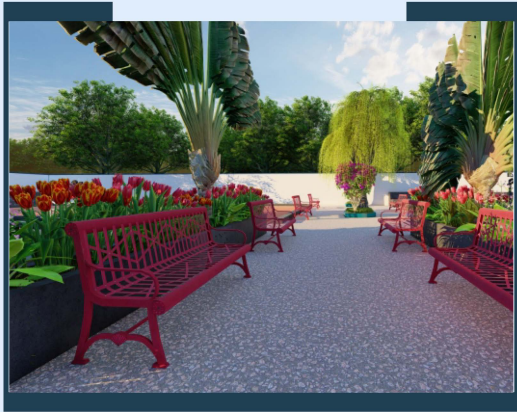
Speed Breaker



Park Aerial View

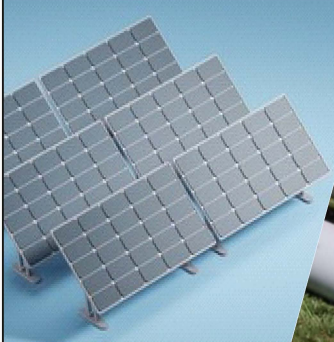


Retail Shop Area



Seating Bench

Other Amenities



Solar Panel



Underground Water Supply Pipe Line



Underground Sewer Pipe Line



Road Side Plantation